



always there.  
anywhere.

# REMOTE MEDICAL FACILITY ACCOMMODATIONS

Scalable from 90 to 2,000+ beds

MOBILE

MODULAR





*ATCO has grown into a stable and diversified, multi-billion dollar corporation by delivering service excellence and innovative solutions around the world.*

## WHO IS ATCO?

In 1947, R.D. (Ron) Southern and his father, S.D. Southern, founded **ATCO Structures** to meet the stringent housing needs of workers in remote oil fields across northern Canada. Through an intrinsic and genuine dedication to excellence, the company quickly became the premier remote shelter source worldwide. Today, ATCO Structures brings its robust prefabrication expertise to meet the increasing demands for permanent offsite constructed multi-family and hospitality projects across North America.







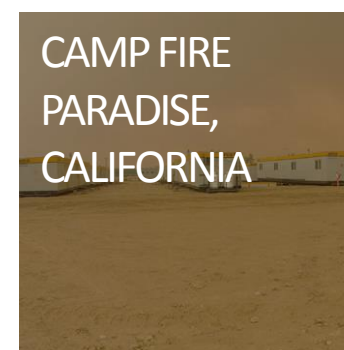
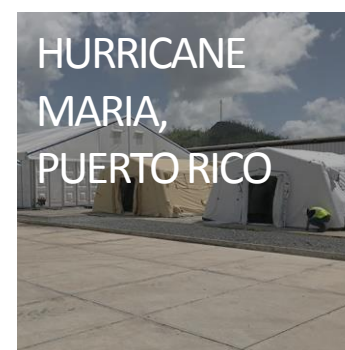
# DISASTER & EMERGENCY MANAGEMENT

## INCIDENT FACILITIES AND STRUCTURES

Having a disaster preparedness plan that includes shelters is key to assisting and rebuilding your community when disaster strikes. Our shelters keep relief workers, first aiders, essential service providers safe and dry, and can be used as:

- Emergency Medical Facilities with Accommodations
- Headquarters For Distribution And Recovery Planning
- Kitchen And Dining Facilities
- Treatment Spaces
- Temporary Housing
- Temporary Offices

## OUR EXPERIENCE

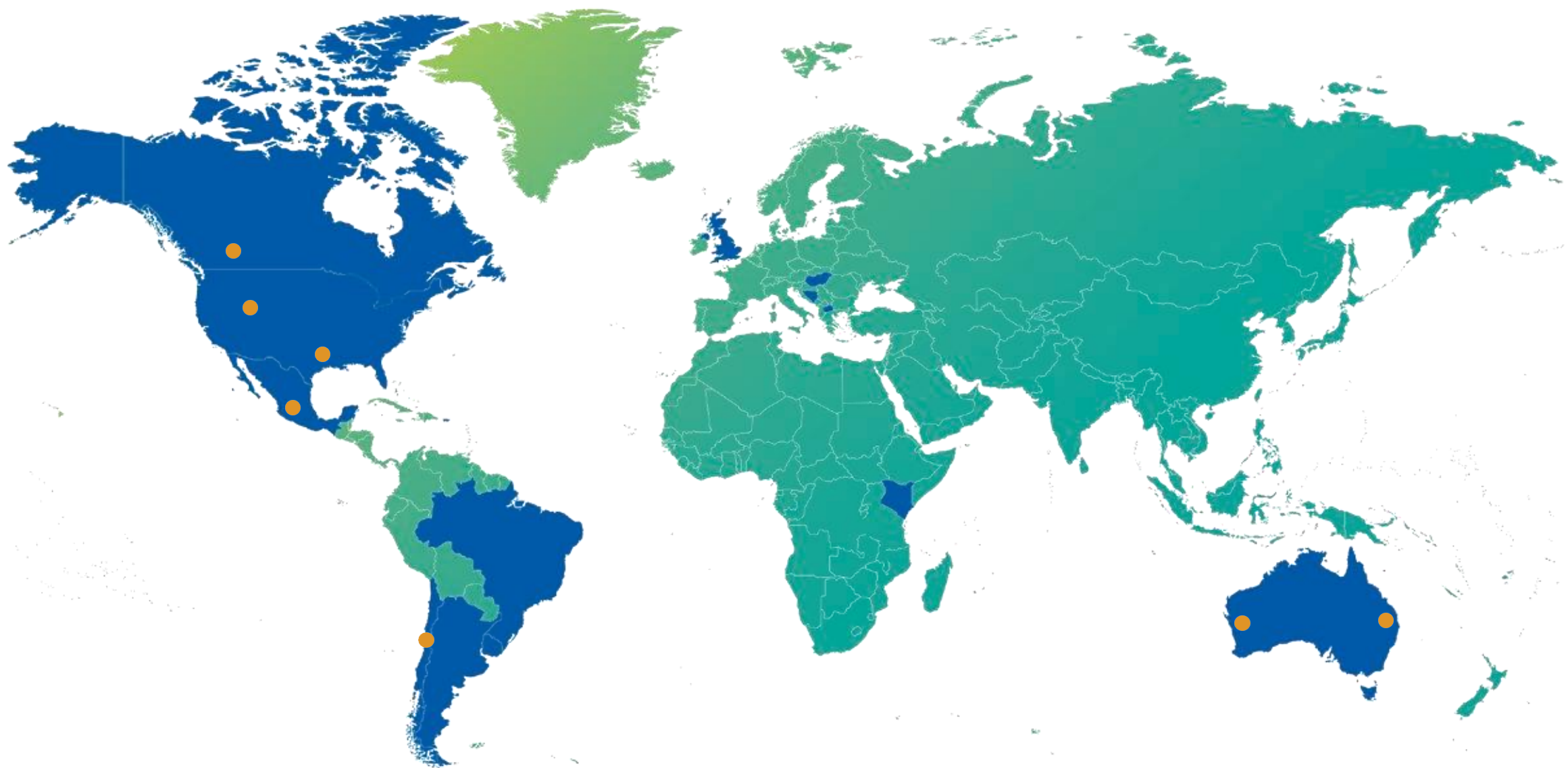


2019  
STATISTICS

\$22 Billion in assets  
\$365 Million in earnings A-1 rating from Standard & Poors



ATCO Structures, is a company of the ATCO Group.



■ ATCO's worldwide operations.

# ATCO IN THE WORLD



Structures & Logistics



Pipelines & Liquids



Power generation

7

MODULAR CONSTRUCTION FACILITIES

CANADA-1	AUSTRALIA- 2	MEXICO-1
U.S.A.-2	CHILE-1	

ATCO Structures, integral modular solutions.



always there.  
anywhere.

A close-up, high-angle photograph of a healthcare professional, likely a nurse or doctor, wearing a blue surgical cap and a white surgical mask. The person's eyes are visible above the mask, looking down with a focused expression. They are wearing green scrubs. The background is dark and out of focus, suggesting a clinical setting.

WE BUILD THE SPACES,  
WHERE HANDS TAKE CARE  
OF OTHERS WITH PASSION.





# MEDICAL CENTERS

Healthy communities are built on the shoulders of healthy members. We have supported many communities in providing the spaces required to assist all aspects of healthy community living. Whether temporary or permanent we have the capabilities to design and construct medical buildings where and when you need. Our modular design build services will ensure that your custom solution will be built fast and safely to meet all the requirements of the community it's servicing.

The right solution means a healthier community, let us provide a solution today.

## *Proposed Solutions:*

- Emergency Medical Facilities
- Homeless Protection
- First Aid Stations
- First Responder Substations
- Temporary Testing Facility
- Remedial Care Spaces
- Medical Offices
- Flexible Spaces



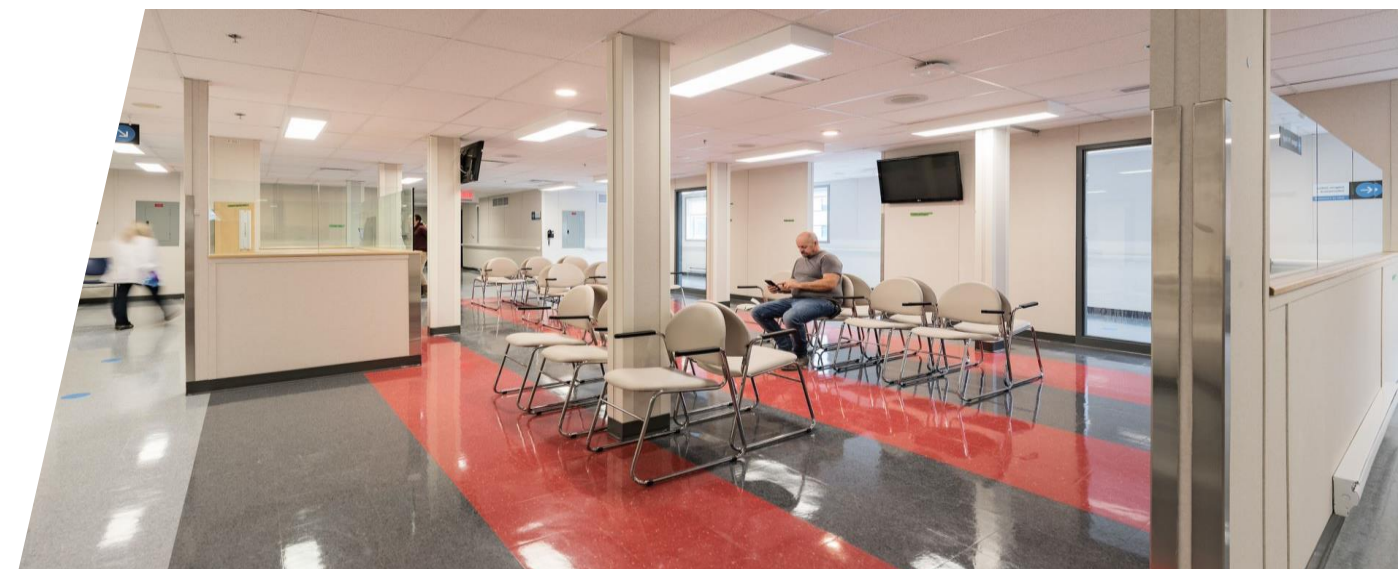




# ***MONTREAL HEART INSTITUTE***

Every project is a unique collection of challenges, but some buildings need even more specialization, even more precision. Sometimes there just isn't any room for error. Good thing we never tolerate any.

In 2018, the Montreal Heart Institute started a major expansion project, adding an emergency cardiac care unit and other significant upgrades. To maintain its critical care services, we built and installed a temporary emergency building with all the technical facilities the institute needs. It's an enormously important showcase of our attention to detail and ability to meet the exacting standards of a highly technical facility.







# NEPEAN CANCER CARE CLINIC

NSW Health Infrastructure required a fully functioning Cancer Care Clinic to be constructed at the Nepean Hospital. With proximity to an operating hospital, execution of the project required minimum site disruption.

ATCO was engaged by Stephen Edwards Construction on behalf of NSW Health to design, manufacture and install the medical facility. Due to the specific nature of the building and Health Building Guidelines, a detailed design period was undertaken involving several stakeholders including, end users, engineers and consultants. The design included, treatment rooms, reception, offices storage and amenities. ATCO's scope included all services from Electrical, HVAC, Medical gases and Hydraulics.

ATCO delivered the building on time, within budget with a high standard of finish.  
Completed January 2019





# ***LOMBRUM MEDICAL FACILITY***

ATCO Structures and Logistics provides design and documentation, manufacture, transport and installation of high- specification multi-module health complexes. ATCO works with client and end- user stakeholders in the concept design and development for the modular health facilities that are delivered within 24 weeks, including an 18-week manufacture process and 4-6 week on-site installation.

The ATCO health facilities also meet regulations associated with remote and tropical locations including seismic requirements.

ATCO modular health facility components meet specific classifications required for medical use such as: Operating theatres, Dental suites, X-ray facilities, Phlebotomy facilities, Recovery rooms, Observation rooms, Patient areas, Containment areas, and Morgue facilities.



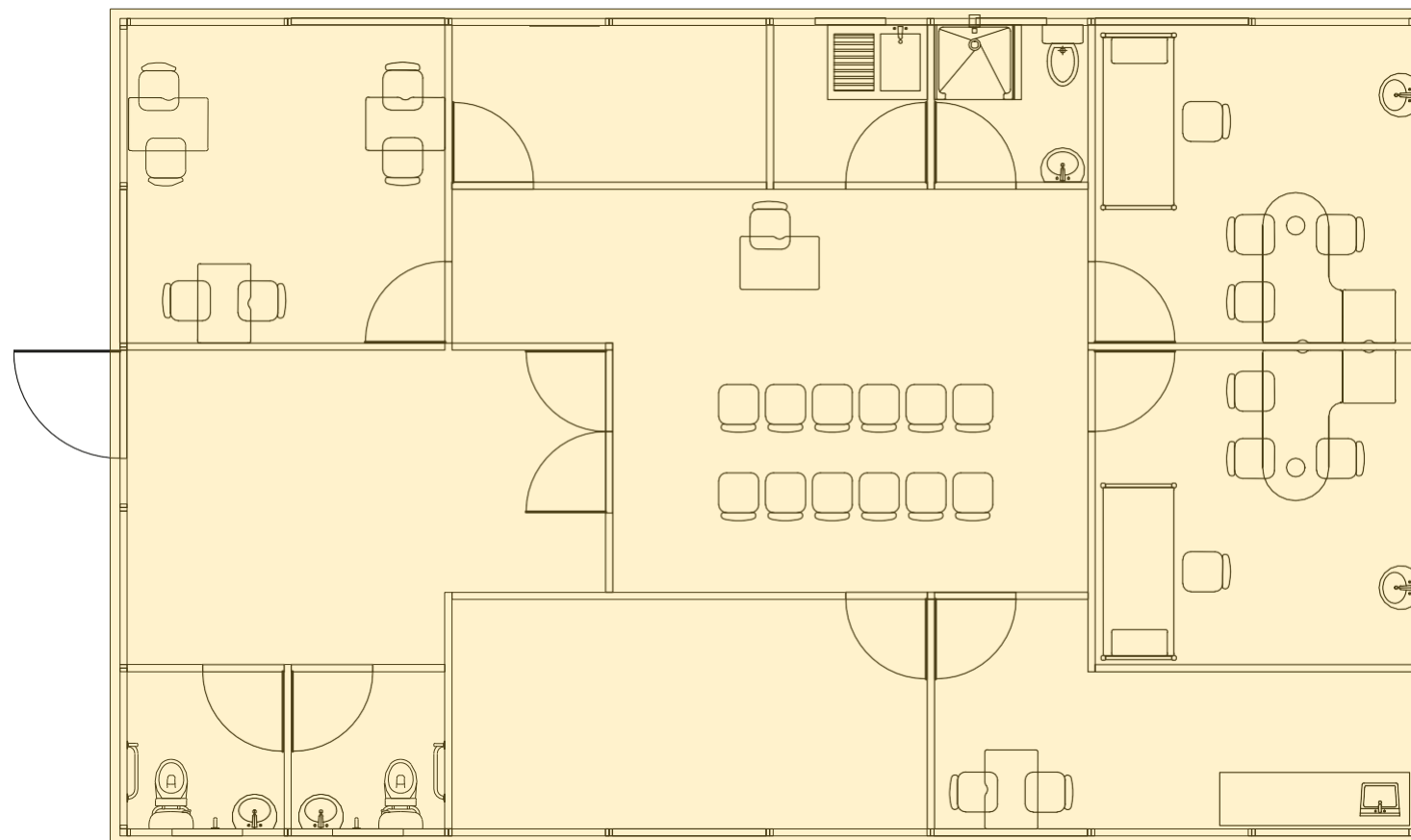
MODULAR

# Modular Clinics

A new time-cost effective vision of smart spaces, easy for transportation and installation under high quality standards.

MODEL: **3 MODULE**

EXTERIOR DIMENSIONS: **W 36' L 60' H 13'**



Note: The models shown are a representative sample of the alternatives we can offer.



## Contract type:

- ✓ **FOR SALE**
- ✓ **FOR RENT**
- ✓ **FOR RENT WITH PURCHASE OPTION**

## Benefits:

- STEEL CLEAR SPAN TRUSSES FOR OPEN CONCEPT BUILDINGS.
- HEALTH CARE STYLE WELDED SEAM FLOORING
- TALL CEILINGS
- LED LIGHTING WITH OCCUPANCY SENSORS
- EASY TRANSPORTATION AND ASSEMBLY, WHICH ALLOWS INSTALLATION IN THE MOST REMOTE PLACES.

## Ideal for:

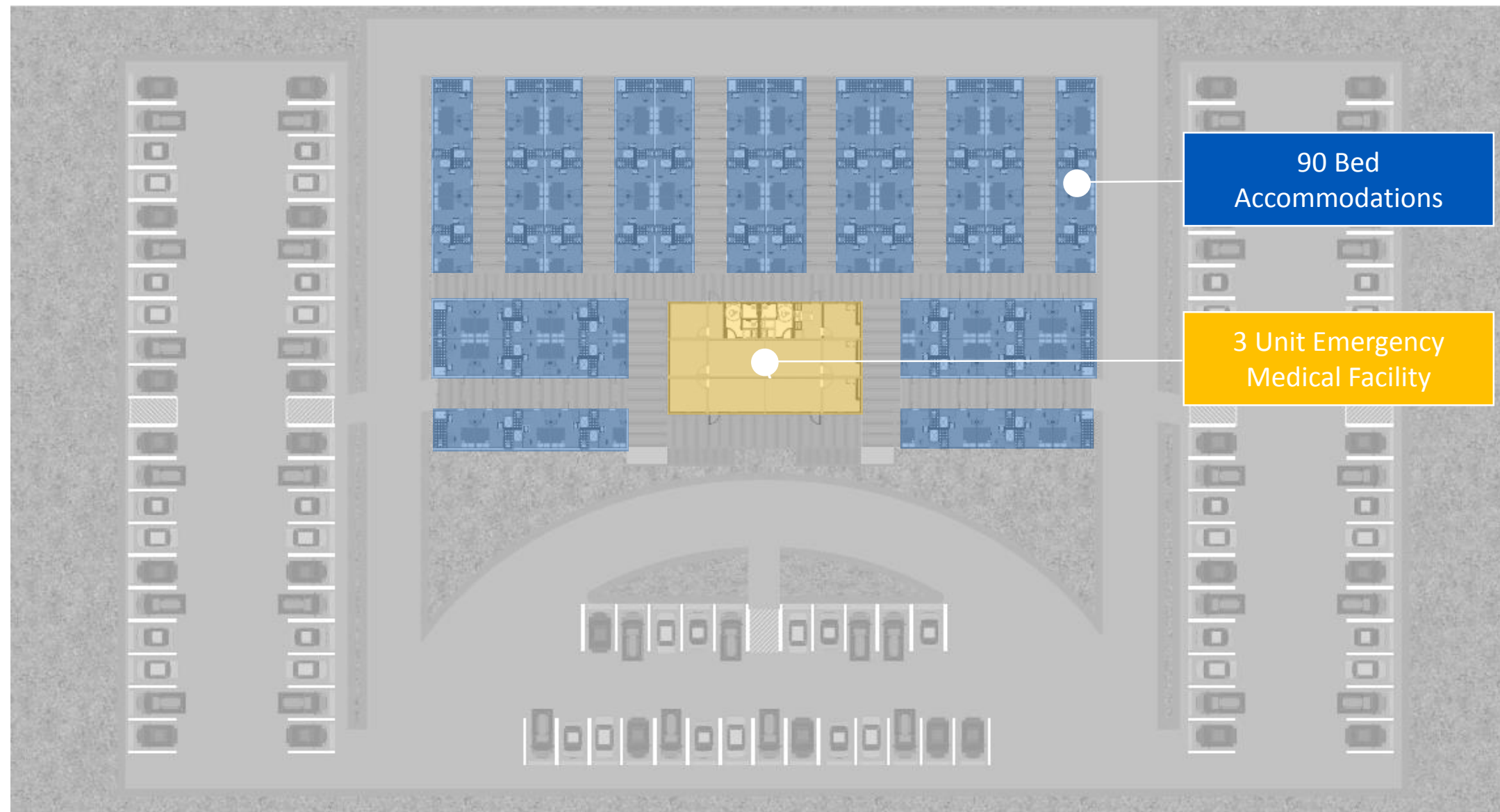
- OFFICES
- SHOWROOMS
- STORAGE
- MEDICAL OFFICES
- DORMS



# MODULAR

## Modular Clinics

A new time-cost effective vision of smart spaces, easy for transportation and installation under high quality standards.



Note: The models shown are a representative sample of the alternatives we can offer.

***PROPOSED 90 BED ACCOMMODATION WITH 3 UNIT EMERGENCY MEDICAL FACILITY***



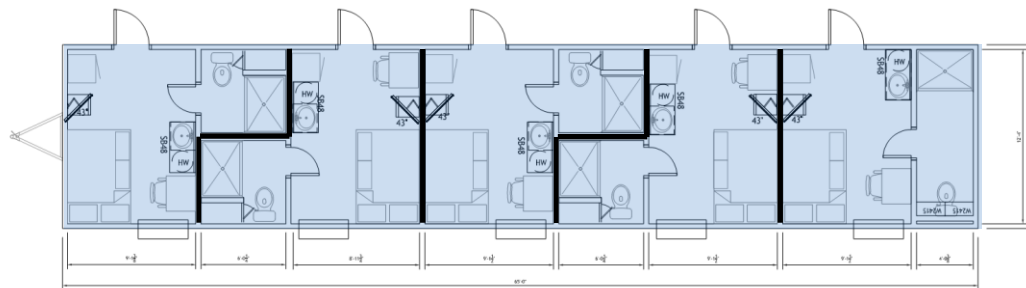
MOBILE

# 5 Single Person & Family Style Apartment

Permanent or temporary, mobile units, custom designed with high quality materials and finishings. Pre-manufactured in plant and built on-site, with ample interior spaces.



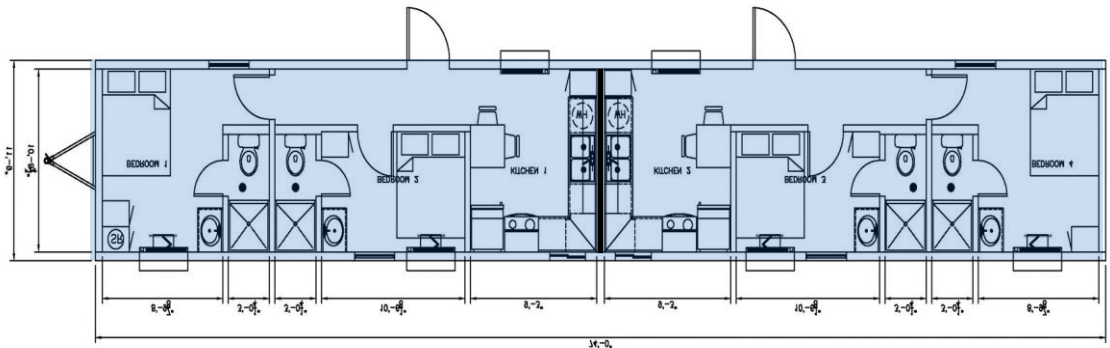
MODEL 5 Person Single Occupancy with Private Bathrooms



INCLUDES:

- Single Occupancy with Private Bathrooms
- Furnished with TV, mini-refrigerator, desk, chair, full-size bed, & mattress
- Built in the USA for quiet and comfortable accommodations

MODEL 2 Family Style Apartments with Private bathrooms



INCLUDES:

- 2-Bedroom/2-Bath Apartment, with complete Kitchen and Dining area
- Furnished with TV, Refrigerator, desk, chair, queen-size beds, & mattress
- Built in the USA for quiet and comfortable accommodations

Note: The models shown are a representative sample of the alternatives we can offer.

2,000 BEDS AVAILABLE

392 BEDS AVAILABLE

Contract type:

- ✓ FOR SALE
- ✓ FOR RENT
- ✓ FOR RENT WITH PURCHASE OPTION
- ✓ FINANCING

Benefits:

- PRODUCED IN OUR PLANT.
- HIGH QUALITY FINISHES.
- FURNITURE AND ACCESSORIES INTEGRATION.

Ideal for:

- OFFICES
- SHOWROOMS
- STORAGE
- MEDICAL OFFICES
- DORMS





# OUR PASSION AND EXPERIENCE AT YOUR SERVICE

ATCO Structures remote workforce housing and work solutions.





**CANADA**

**Call 1 (800) 575.ATCO (2826)**

**email [Structures@atco.com](mailto:Structures@atco.com)**

**USA**

**Call (832) 702.7990**

**(303) 726.4162**

**email [Structures@atco.com](mailto:Structures@atco.com)**

***CONTACT INFORMATION***

**ATCO**

**[www.ATCO.com](http://www.ATCO.com)**