The background of the entire page is a photograph of an ATCO mobile lavatory unit. The unit is a large, rectangular, metallic structure with a white upper half and a dark lower half. It has two large doors on the front, each with a small window. A set of stairs with metal railings leads up to the entrance between the doors. The unit is parked on a paved surface. The entire image has a blue color overlay.

TOW-N-GO SELF-CONTAINED MOBILE LAVATORIES

Product Overview

The **Tow-N-Go (TNG)** is ATCO's response to changing requirements in the temporary washroom space.

Urban work sites require smaller footprints and less room for construction trailers. Major public events like outdoor concerts, conferences or festivals are moving away from multi-stall lavatories or portable toilets. Further, access to services like sewer and water are an even bigger challenge. The TNG offers a mid-range fully self-contained solution that can be mobilized with ease anywhere your team goes to work with the modern comforts your team has come to expect.

Benefits

- The module can be towed with a fleet truck and a 2" Ball Hitch.
- TNGs have 200 gallons of water/sewage capacity so you will not need access to site services or ancillary water/sewage tanks.
- Complementary of your existing site modules with two private toilet stalls inclusive of standard washroom accessories (e.g., mirror, sink, paper towel dispenser).
- TNGs are also available in a four-stall layout for larger sites.
- For flat-bed deliveries, the TNG has fork pockets for easy loading and unloading.
- Built-in fold down stairs and railings.
- Sanitary—comes fully loaded with below counter HOT WATER.
- Compact, rugged design—6' x 13'.
- Powered by 110 VAC.
- Easy to set-up, maintain and winterize.
- Heated and heat-traced for cold Canadian winters!

Optional Services

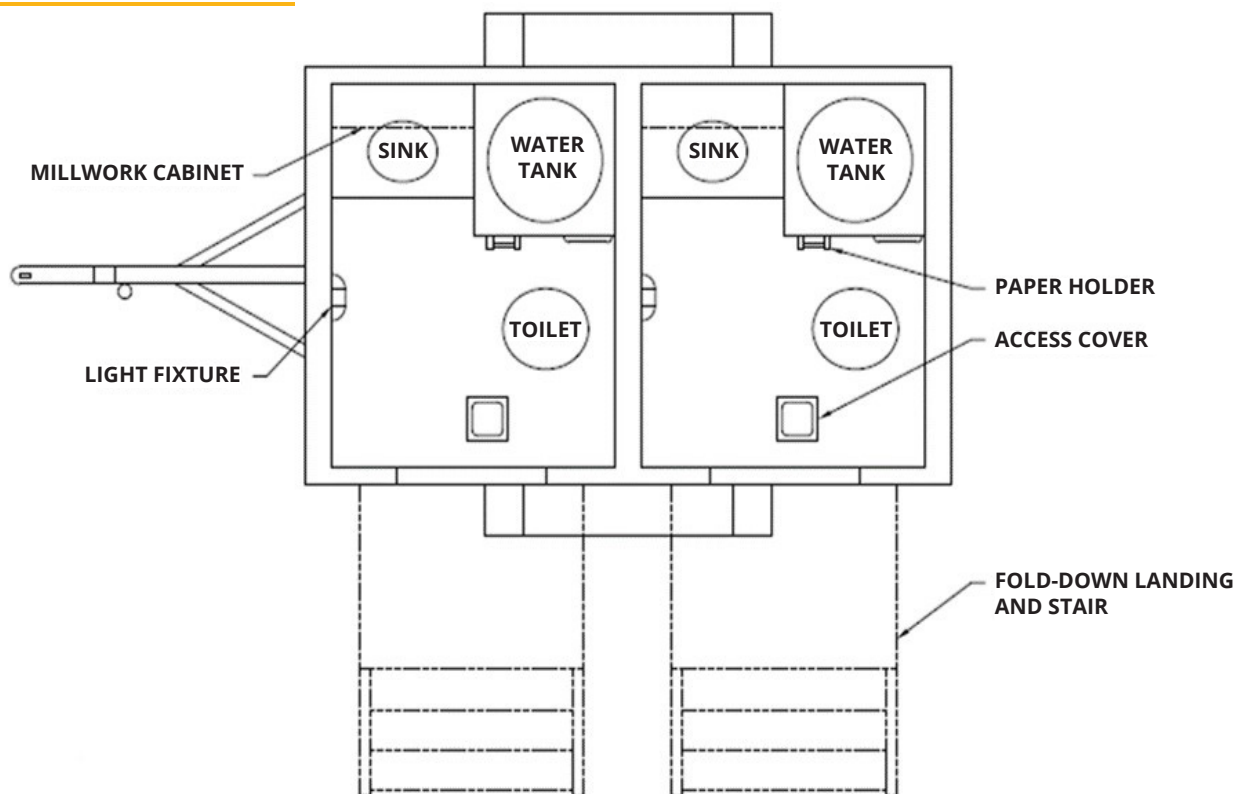
- Septic Waste Removal
- Water Services
- Cleaning





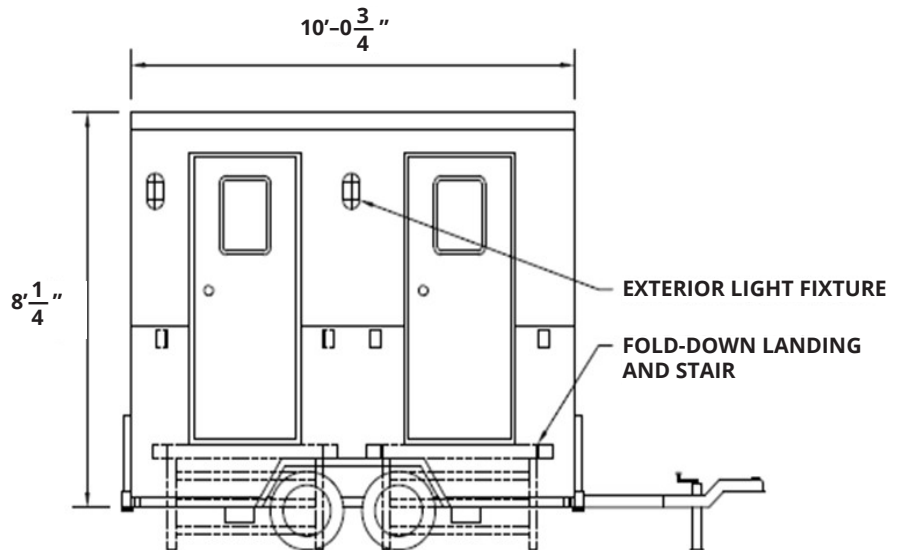
ATCO's Self-Contained Tow-N-Go provides temporary washroom space for all your business requirements and destinations.

FLOOR PLAN FOR 2 STALLS

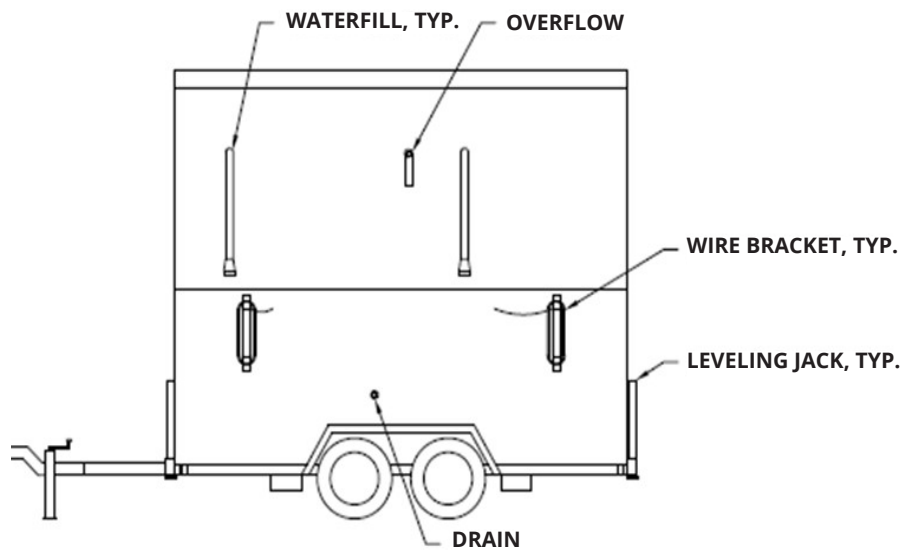


ELEVATIONS

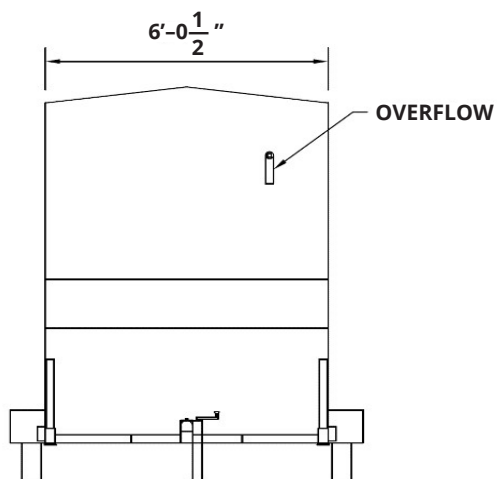
RIGHT VIEW



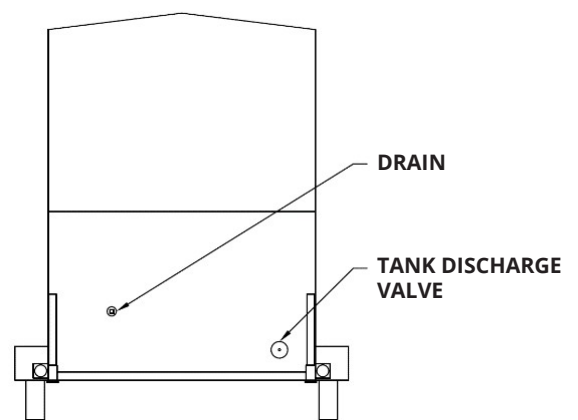
LEFT VIEW



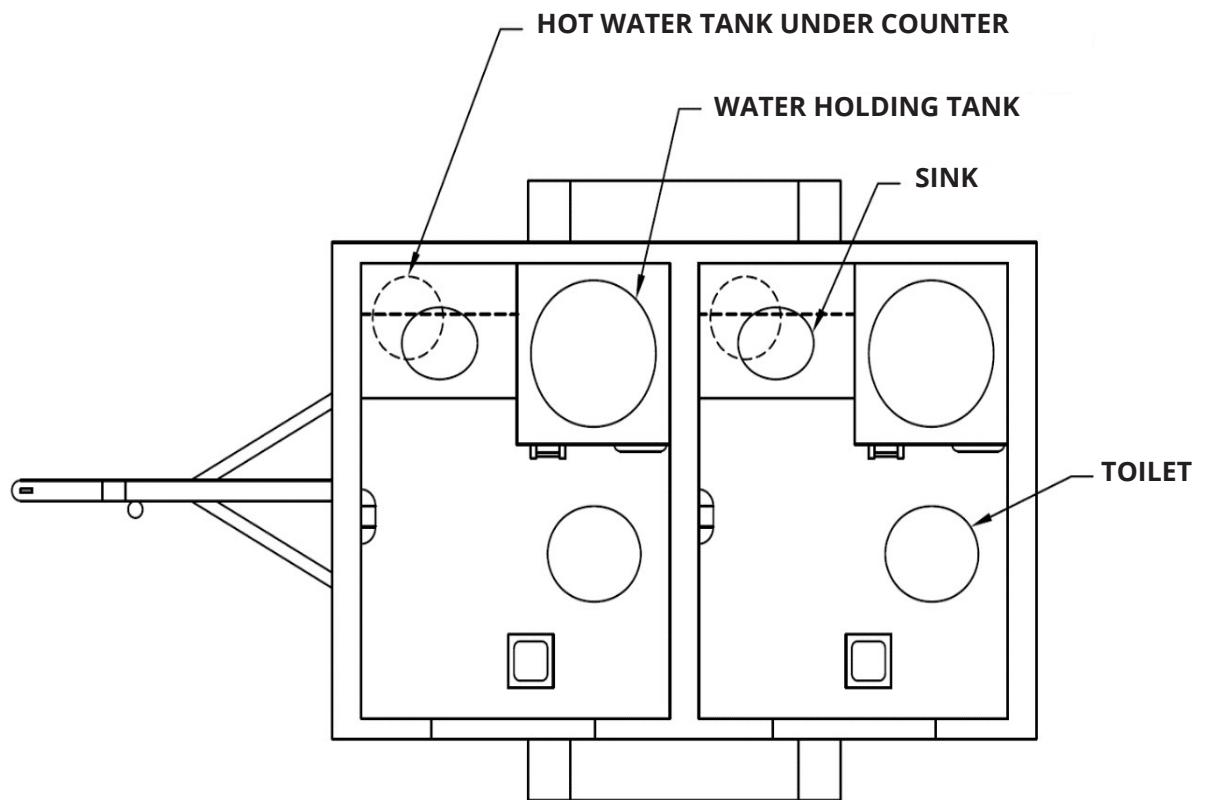
FRONT VIEW



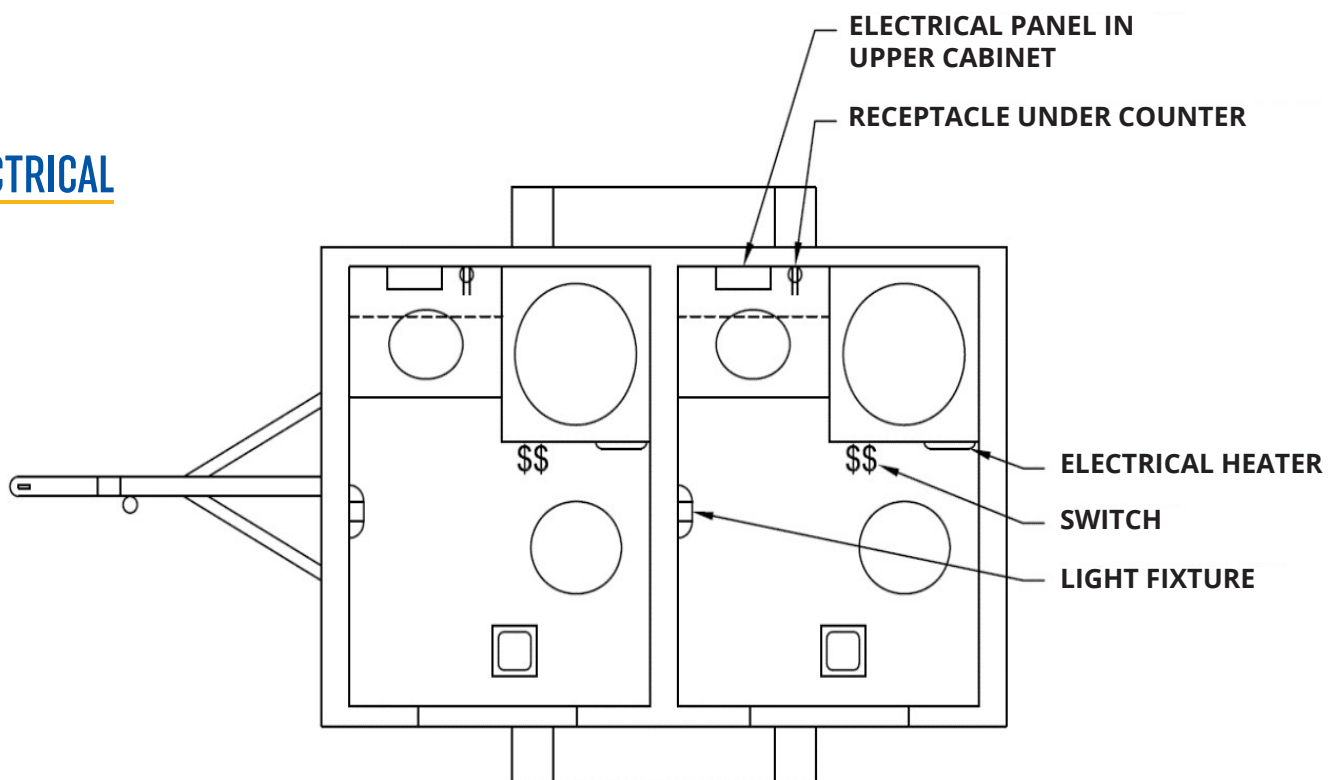
REAR VIEW



MECHANICAL

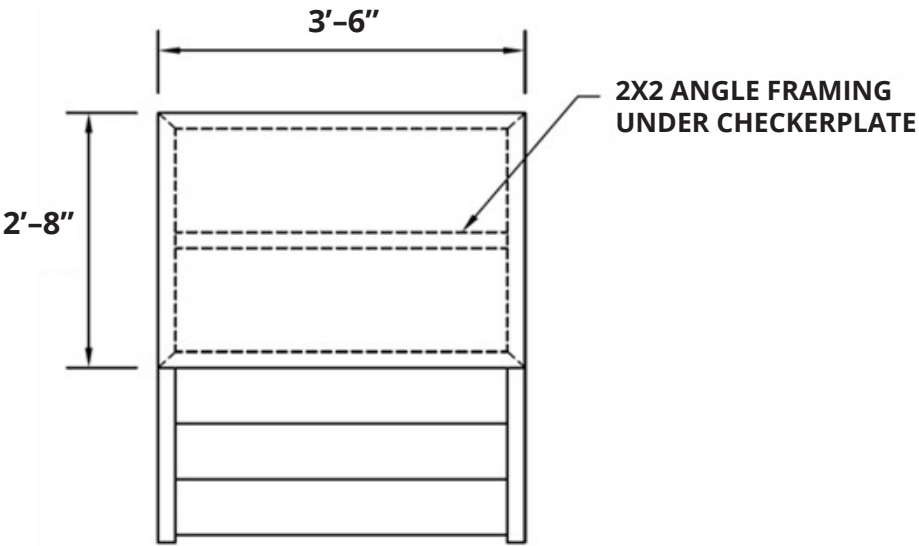


ELECTRICAL

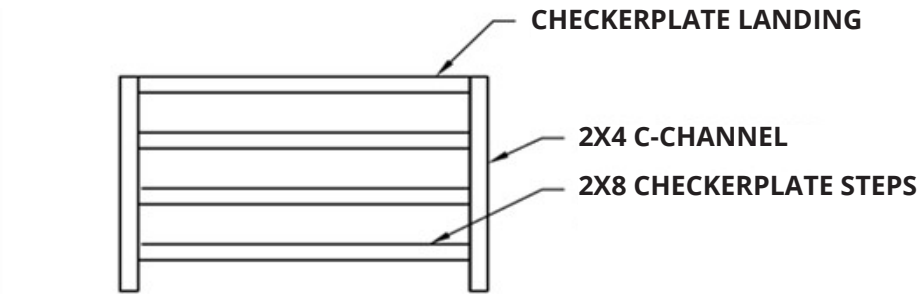


FOLD-DOWN LANDING AND STAIRS

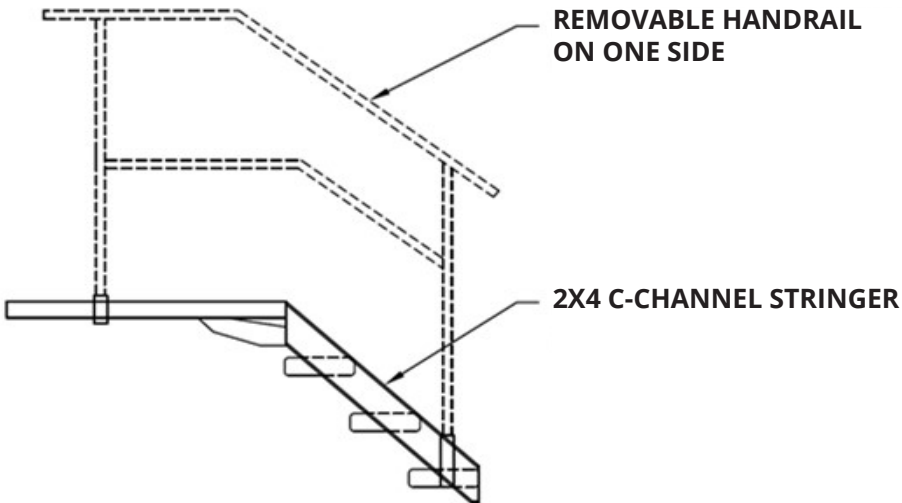
TOP VIEW



FRONT VIEW



SIDE VIEW



ATCO STRUCTURES

Call 1-800-575-2826 (ATCO)

ALBERTA

Calgary
(403) 292-7600

Edmonton
(780) 962-3111

Fort McMurray
(780) 714-6773

MANITOBA

Winnipeg
(204) 633-8233

BRITISH COLUMBIA

Vancouver
(604) 856-0711

Prince George
(250) 561-2255

SASKATCHEWAN

Saskatoon
(306) 374-2848

Regina
(306) 525-3332

ONTARIO

Toronto
(905) 532-0012

Ottawa
(613) 749-2826

Timmins
(705) 235-5565

Sudbury
(705) 525-0404

QUEBEC

Montreal
(450) 619-2699

GET YOUR TOW-N-GO TODAY





ATCO

[ATCO.com](https://www.atco.com)