

**ATCO** Structures™

# For Future Athletic Stars & Their Communities











# Constructed While You Coach

Our passion for modular construction enables you to focus on your club and it's athletes while we build your new amenities. And... Thanks to offsite manufacturing with minimal installation site disruption you can keep training while you wait.

With more than 75 years of experience ATCO Structures is a pioneer in the design, engineering, manufacture, and installation of modular buildings.

From our iconic yellow-banded rental units to small and large workforce villages, and architecturally designed, multi-purpose modular buildings our modular products are an essential part in the future of construction. By designing and constructing shelters that are more functional, transformative, timely, and energy performing, ATCO Structures is creating better buildings for all to inhabit.

## The 6 Step Process

Our six step process allows you to focus on the sport while we look after the permits, approvals, and construction. Our experienced project team works with you from the start to the finish of your modular building journey.

- 1 Contact ATCO Structures
- 2 Discuss feasibility and building options
- 3 Apply for grants and engage stakeholders
- 4 Approve designs
- 5 Watch installation
- 6 Move in

## The Benefits of Modular Construction

As one of the Modern Methods of Construction, modular construction offers **seven key benefits** above and beyond traditional building methods making it the ultimate construction solution for Australia's future.

Modules are prefabricated off-site in a factory at the same time as the preparation of the installation site resulting in **shorter construction times** and **less on-site disruption**. This means your club members are safer and can remain focused on their training or game.

The **flexible and scalable** nature of modular buildings means that your amenities can be extended to align with the needs of your club. Additionally, modular buildings can be elevated on a flood plain, installed with non-penetrating foundations on an old landfill site, or picked up and relocated to a new location as needed.

Tried and tested processes and efficient use of materials by skilled tradies in our controlled factory environment, enables **cost clarity**. Further to that our controlled energy consumption, and efficient delivery processes have resulted in a carbon-generative construction method. Which means your relocatable and recyclable amenities are **more sustainable** and better for the environment.

Our strict quality assurance regime and adherence to the National Construction Code, ensures **quality guarantee** and end user satisfaction. Through the use of robust materials our buildings are **high-performing** and **long lasting** just like those built via on-site construction methods.



## Temporary Hire Buildings

ATCO Structures temporary hire buildings are the cost-effective, reliable solution for keeping your sports club operating during capital works or housing the construction project team during the insitue construction of your facility. Offering one of the largest fleets in Australia, our temporary buildings are available for short or long term hire, or on the spot purchase. We have a building to meet any need including offices, meeting rooms, lunchrooms, first aid facilities, change rooms, and toilet/ablution blocks that can be configured to suit your project.

- » Construction site compounds
- » Temporary event amenities
- » Emergency shelter
- » Overflow office space
- » Classrooms



## Bespoke Modular Buildings

Gone are the days of dull box like demountables, today's modular buildings are fitted out for technology and showcase innovative architectural features to ensure your building performs as well as your club does. From integrated multi team change rooms and shower facilities to community function rooms our fully customisable modular buildings offer a faster, less intrusive construction solution.

- » Community function rooms
- » Sports club admin and meeting rooms
- » Change rooms, toilets, and showers
- » Canteen and commercial kitchens
- » Coach and umpire facilities
- » Equipment stores
- » First aid rooms

# Building Features

Modular buildings can be completely customised to suit the specific needs of the user including meeting rooms, first aid rooms, change rooms, multi-purpose rooms, function rooms, toilets and showers, accessible amenities, canteen and commercial kitchen, equipment storage, ground keeping storage, and referee/administration rooms.

Designed and manufactured in Australia to Australian Building Standards, our modular buildings are constructed from sustainable and durable materials and include connection of sewage, electrical, HVAC, and data services.

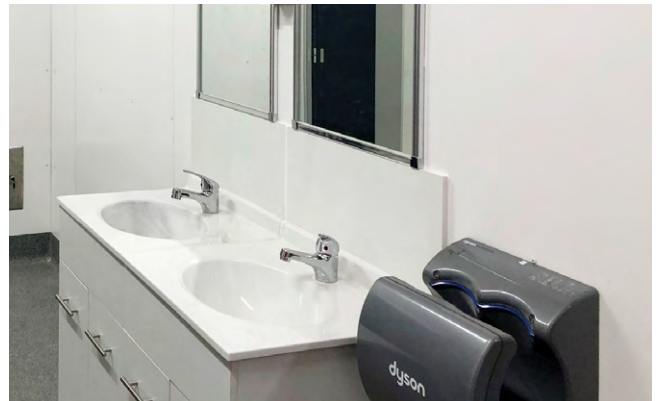
Our design team works with you regarding roof line, external features, and signage to produce a state-of-the-art facility with a modern street appeal that is durable, easy to clean and maintainable.

## Standard

- » Steel frame
- » Aluminum windows
- » Colorbond cladding
- » Insulation
- » Easy clean walls
- » Carpet tiles to floors
- » Quality fittings and handles
- » Colorbond guttering and downpipes
- » Lighting, power, and data outlets
- » Security screens on windows
- » Split system air conditioning

## Additional

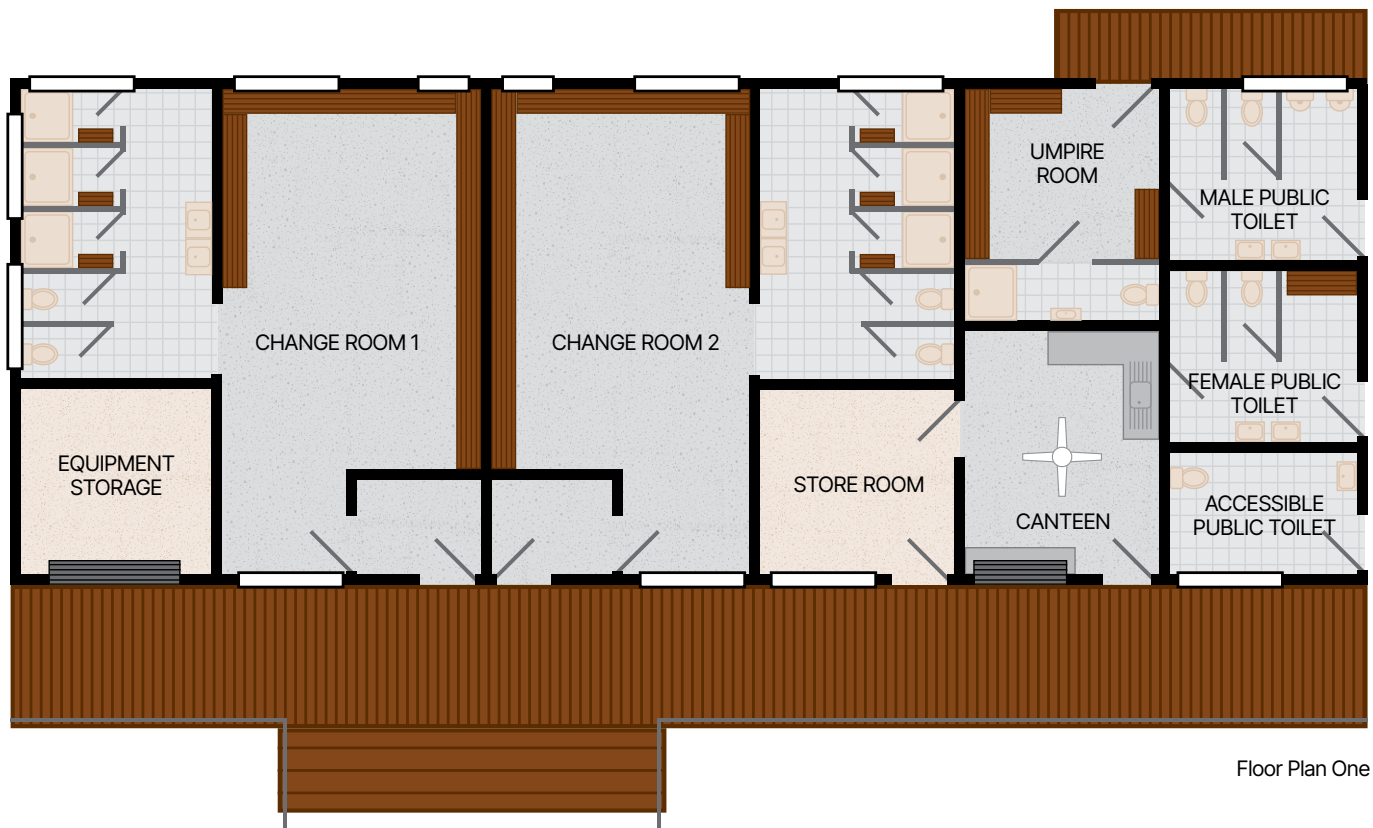
- » Whiteboards
- » Acoustic ceiling panels and ceiling fans
- » Smoke alarms and fire extinguishers
- » Commercial kitchen appliances
- » Master switching and sensor lights
- » Accessibility ramps and elevators
- » Accessibility paving and signage
- » Shelving and cabinetry
- » Roller blinds
- » Solar power
- » Rainwater tanks
- » Trophy cabinets
- » Landscaping
- » Lockers



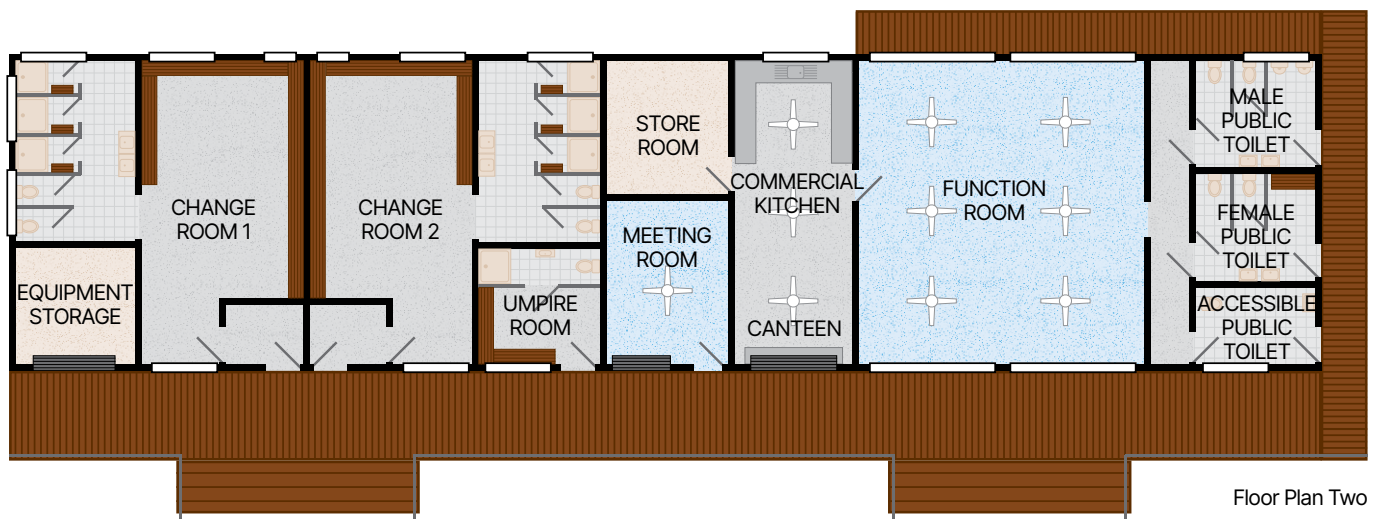


# Floor Plans

Due to the flexible nature of modular construction, buildings can be easily configured to suit the needs of the club or community. Floor plan one is an example of a standard sports club house with both home team and away team change rooms. Floor plan two has been extended to include a function room, commercial kitchen, and meeting room or club administration room. Our design team will work with you when designing your facilities to ensure they meet your needs of your sport or community.



Floor Plan One



Floor Plan Two

# Featured Projects



## → Community and Sport Facilities

Timbrell Park, New South Wales

Timbrell Park is a regional recreational destination utilised by sports clubs, community groups and individuals, schools, and council events. Improved accessibility, enhanced sustainability, and user diversity were considered during the design phase of the 325m<sup>2</sup> multipurpose building and 170m<sup>2</sup> amenities block with connecting pathways and ramps.

ATCO Structures worked with architect CM+ to produce esthetically pleasing state-of-the-art buildings, featuring exterior cladding, a feature window, and lush landscaped gardens.



## → Soccer Clubrooms and Community Facilities

Roxburgh Park, Victoria

Designed to meet the needs of the local soccer team and community groups this 1000m<sup>2</sup> modular building featured sports club rooms, change rooms and showers, amenities, referees room, commercial kitchen, bar, and dining room.

Architectural features such as timber ceiling panels, floor to ceiling windows, and coloured exterior cladding give this building a contemporary modern aspect while providing uninterrupted views of the sports field and invoking community ownership.



## → Netball Clubrooms and Facilities

Woombyne, Queensland

Accessibility and club spirit were key stakeholders in the design needed to be cost-effective and functional, while being aesthetically pleasing for the community. ATCO provided a modular no-penetration installation solution specifically designed for installation on the old landfill site.

Full turnkey delivery of the 190m<sup>2</sup> building took place over a 10 week period providing universal access, a designated referee space, a canteen and commercial kitchen, a meeting room, an equipment storage room, and a central raised covered spectator space with cement grandstand seating.



## → AFL/Cricket Clubrooms and Community Facilities

St Leonards, New South Wales

Designed to suit the sloping terrain, the 660 m<sup>2</sup> modular building was installed on a raised platform, facilitating accessible rear access while providing a raised platform to view the field. The layout included multi-purpose rooms, male and female amenities and change rooms, accessible amenities, store rooms, and a commercial kitchen.

The building featured glass sliding doors and roof-to-floor windows to provide uninterrupted views of the sporting field from inside, along with covered walkways and a central covered open space for outside spectator shelter. Electric roller shutters were utilised to separate change rooms and provide room size flexibility.





# A Global Leader in Modular Solutions

ATCO Structures specialises in the design, engineering, manufacture, and installation of turnkey modular structures for permanent or temporary use in accordance with the National Construction Code and Australian Standards. We have a solid reputation for delivering modular solutions and associated services throughout Australia on time and within budget.



We are:



Safe and efficient in everything we do.



Honest and ethical with comprehensive customer service.



Caring and understanding of our community and environment.



Agile and pro-active and learn from our failures.



Collaborative and encouraging of team environments.

**ATCO** Structures™

**ADELAIDE** 55–61 Kaurua Avenue, Edinburgh SA 5111

**BRISBANE** 55 Tonka Street, Luscombe Qld 4207

**CANBERRA** 9 Pethard Road, Hume ACT 2620

**MACKAY** 78 Harbour Road, Mackay Qld 4740

**MELBOURNE** 128 Hallam Valley Road, Dandenong South Vic 3175

**NEWCASTLE** 2376 Pacific Highway, Heatherbrae NSW 2324

**PERTH** 28 Armstrong Road, Hope Valley WA 6165

**ROCKLEA** 10–14 Ashover Road, Rocklea Qld 4106

**SYDNEY** 47 Mulgrave Road, Mulgrave NSW 2756

**TOWNSVILLE** 826 Ingham Road, Bohle Qld 4818

**structures.atco.com** | **1800 70 70 77**