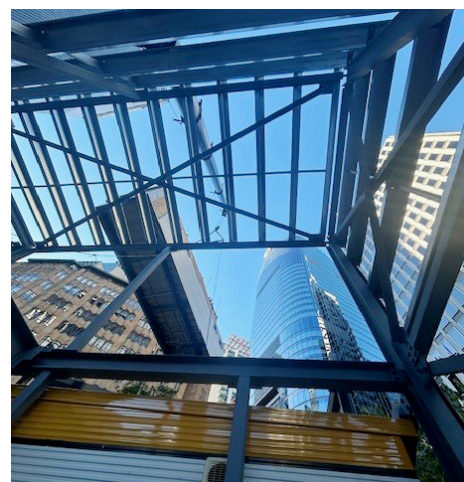
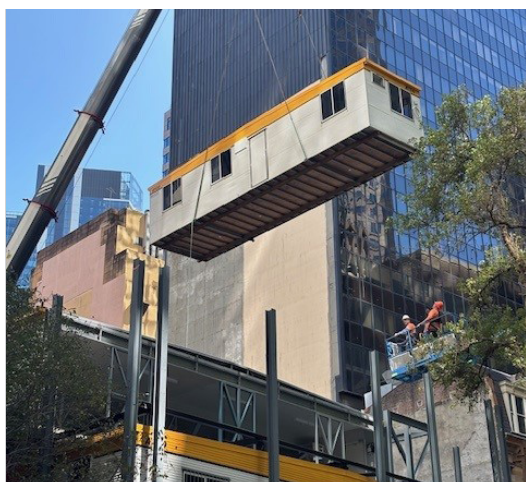


# Eastern Tunnelling Package JV Project Office

Construction Infrastructure



John Holland CPB Contractors Ghella (JCG) was awarded the contract for the Sydney Metro West – Eastern Tunnelling Package (ETP). The ETP works include 3.5 kilometre tunnels under Sydney Harbour between The Bays Station in Rozelle and Hunter Street Station in Sydney CBD. ATCO were engaged by JCG to supply and install double stacked modular buildings to support the workforce for the remaining 18 months of the project.

Installation took place on an early Saturday morning to enable the 250 T crane and crew to negotiate what was a very tight installation amongst high-rise buildings, protected trees, heritage monuments, and the steel gantry members.

The double stacked modular buildings total 360m<sup>2</sup> of floor space, comprising bath house, toilet, changeroom, lunchroom, and storage for use by 120 workers. Additional steelwork was installed to the ATCO building stacking structure to enable the buildings to be wrapped in a fascia and hidden from public view for the duration of the project.

## Snapshot

**Location:** Sydney CBD, NSW

**Date:** April 2025

**Client:** John Holland CPB  
Contractors Ghella  
Joint Venture

### Features:

- » 11 single and multi-modular complex buildings
- » Double stacked on a steel gantry