



VIEW INDICATIVE ONLY

GLA010

ATCO STRUCTURES & LOGISTICS

| DRAWING LIST | | |
|--------------|-----------------------|------------------|
| SHEET NUMBER | SHEET NAME | CURRENT REVISION |
| A000 | TITLE PAGE | A |
| A200 | PLAN - STANDARD OFFER | A |
| A300 | ELEVATIONS | A |
| A500 | SALES SCHEDULES | A |

12.0 x 6.9m SINGLE CLASSROOM

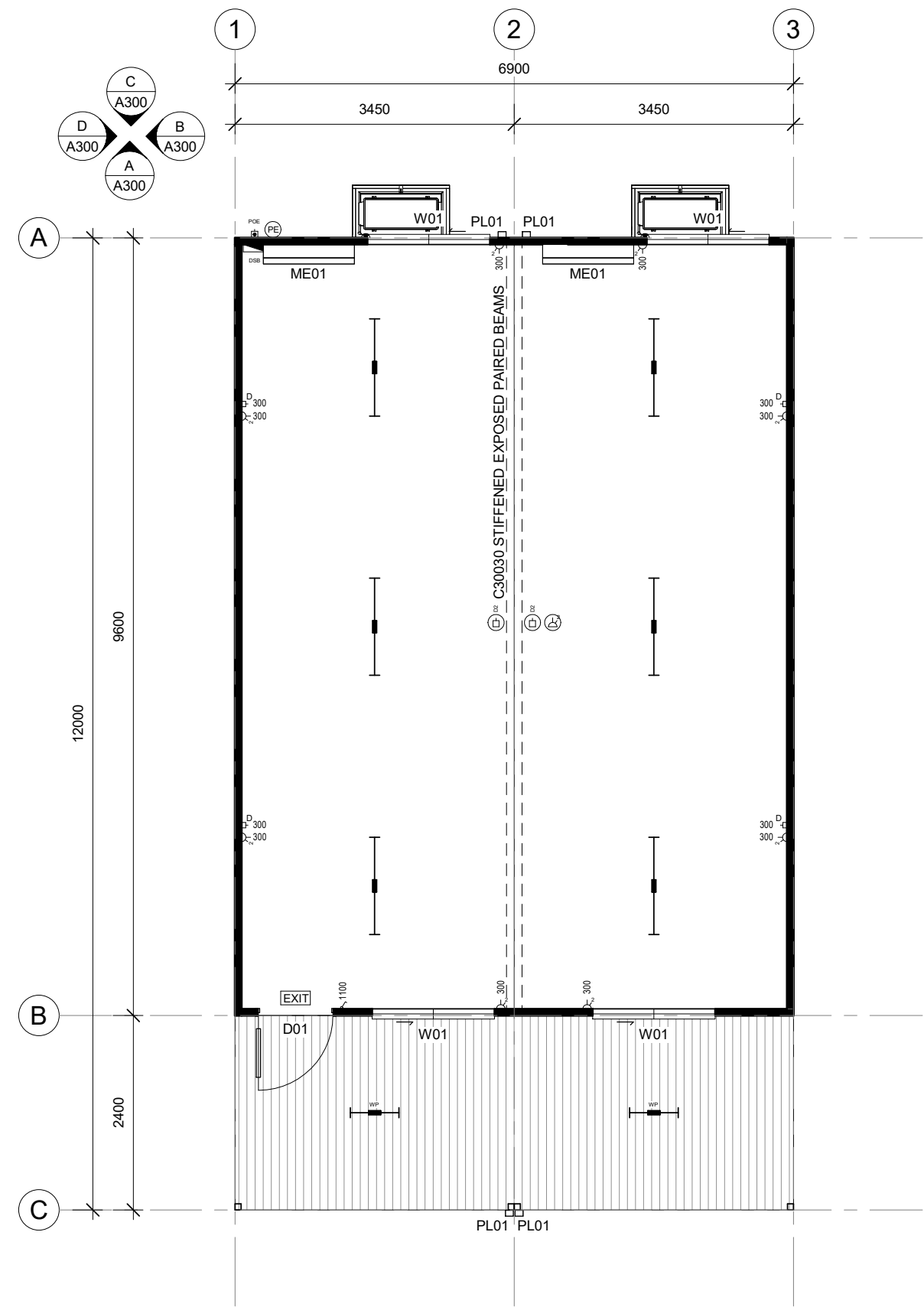
ATCO

ATCO STRUCTURES & LOGISTICS PTY. LTD.
 55 TONKA STREET,
 LUSCOMBE, QLD 4207
 P.O. BOX 393, BEENLEIGH, QLD 4207
 E-mail: ASLSales@atco.com

PHONE: (07) 3412 8600
 FAX: (07) 3412 8699
 ABN: 71 083 902 309

| | |
|-------------------|------------------------|
| WIND REGION: | C |
| TERRAIN CATEGORY: | 2 |
| IMPORTANCE LEVEL: | 2 |
| SHIELDING FACTOR: | NS |
| BUILDING CLASS: | 9b |
| FLOOR LOADS | DISTRIBUTED (kPa): 3.0 |
| | CONCENTRATED (kN): 2.7 |
| CLIMATE ZONE: | - |

FLOOR LOADS CALCULATED FROM AS1170.1 - 2002.
WIND SPEED CALCULATED FROM AS1170.2 - 2011.
BUILDING CLASS, IMPORTANCE LEVEL, PROBABILITY OF EXCEEDANCE, WIND REGION, TERRAIN CATEGORY, TOPOGRAPHIC CLASSIFICATION, SHIELDING FACTOR, CLIMATE ZONE & NORTH POINT ARE ASSUMED UNLESS OTHERWISE ADVISED BY CLIENT.



| FINISHES SCHEDULE | |
|------------------------|--------------------------------|
| FLOOR COVERING | CARPET |
| CLADDING - EXTERNAL | COLORBOND MAXIRIB - HORIZONTAL |
| WALL LINING - INTERNAL | 3.6mm POLYESTER COATED PLYWOOD |
| CEILING LINING | 3.6mm COATED PLYWOOD (GROUP 1) |
| CEILING LINING | 6mm FIBRE CEMENT, PAINTED |
| ROOF SHEETING | 0.42mm BMT SUPERDEK ROOFING |

| ITEM LIST | | |
|-------------------|-----|------------------------------------|
| ITEM | QTY | DESCRIPTION |
| Plumbing Fixtures | | |
| PL01 | 4 | DOWNPIPE - 100 x 75mm c/w 3 STRAPS |

SYMBOL LEGEND

- ELECTRICAL SWITCHBOARD
- ELECTRICAL POINT OF ENTRY
- LIGHT SWITCH, SINGLE
- ISOLATION SWITCH
- GPO, SINGLE POLE - 2x10A
- GPO, SINGLE POLE, CEILING MOUNTED - 2 x 10A
- DRAW WIRE, CEILING MOUNTED - 'D' DENOTES DATA
- LIGHT - 40W LED BATTEN & DIFFUSER
- LIGHT - 40W LED BATTEN - IP65
- LIGHT, EXIT. C0 = E2.0, C90 = E2.0, 24m VIEW DISTANCE
- PHOTO ELECTRIC CELL

1 PLAN
1 : 50

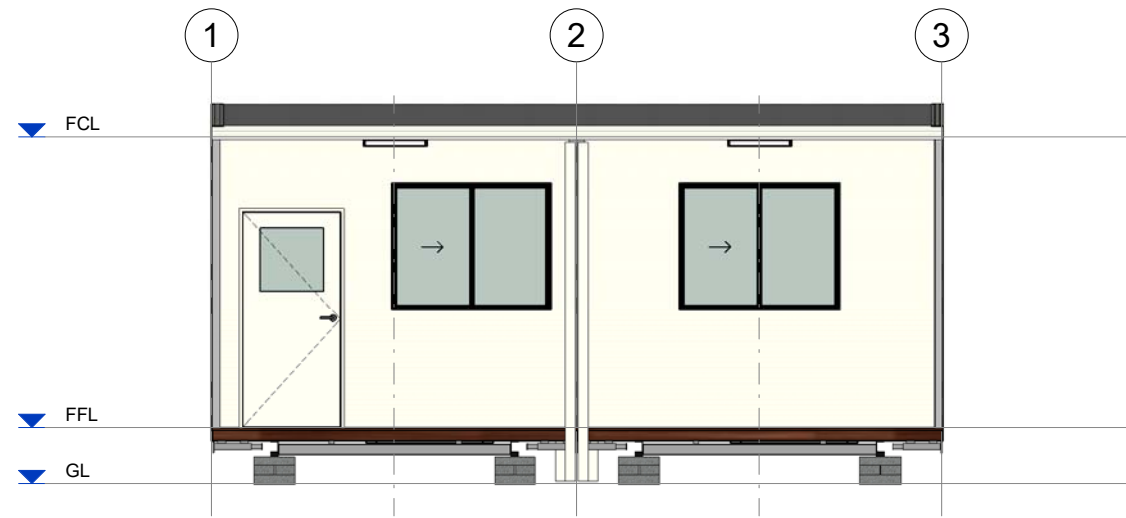
MISCELLANEOUS NOTES

- STAIRS WITH HANDRAILS & TACTILE INDICATORS ARE NOT SHOWN, BUT ARE SUBJECT TO SITE REQUIREMENTS ON REQUEST.
- EXTERNAL BUILDING PERIMETER SKIRTING NOT SHOWN & IS SUBJECT TO SITE REQUIREMENTS ON REQUEST.

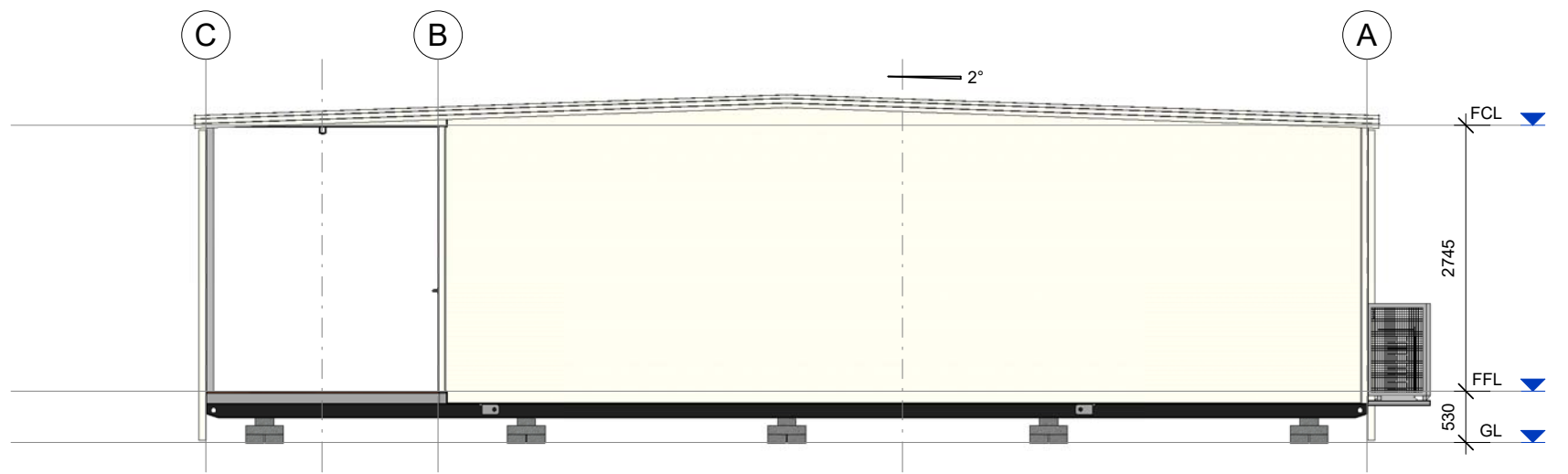
| | | | | | |
|---|-------------------|----------|------|------|--|
| CONFIRM DETAILS OF SET OUTS, LEVELS AND CRITICAL DIMENSIONS ON SITE PRIOR TO SHOP DRAWINGS AND FABRICATION. QUALITY CERTIFIED TO AS/NZS ISO 9001:2008 BY SCH-QUAL INTERNATIONAL REGN No. 531 | | | | | |
| REV | DESCRIPTION | DATE | BY | CHKD | |
| A | ISSUED FOR REVIEW | 26.05.20 | A.C. | | |
| DO NOT SCALE FROM THIS DRAWING. USE FIGURED DIMENSIONS. OVERALL DIMENSIONS EXCLUDE EXTERNAL CLADDINGS U.N.O. ALL CONSTRUCTION TO COMPLY WITH NATIONAL CONSTRUCTION CODE OF AUSTRALIA AND APPLICABLE AUSTRALIAN STANDARDS. THIS DRAWING REMAINS THE PROPERTY OF ATCO STRUCTURES & LOGISTICS PTY. LTD. (ATCO). IT MAY NOT BE REPRODUCED OR COPIED WHOLE OR IN PART WITHOUT WRITTEN AUTHORITY. | | | | | |

ATCO
ATCO STRUCTURES & LOGISTICS PTY. LTD. PHONE: (07) 3412 8600
55 TONKA STREET, LUSCOMBE, QLD 4207 FAX: (07) 3412 8699
P.O. BOX 393, BEENLEIGH, QLD 4207 ABN: 71 083 902 309
E-mail: ASLAu.Sales@atco.com

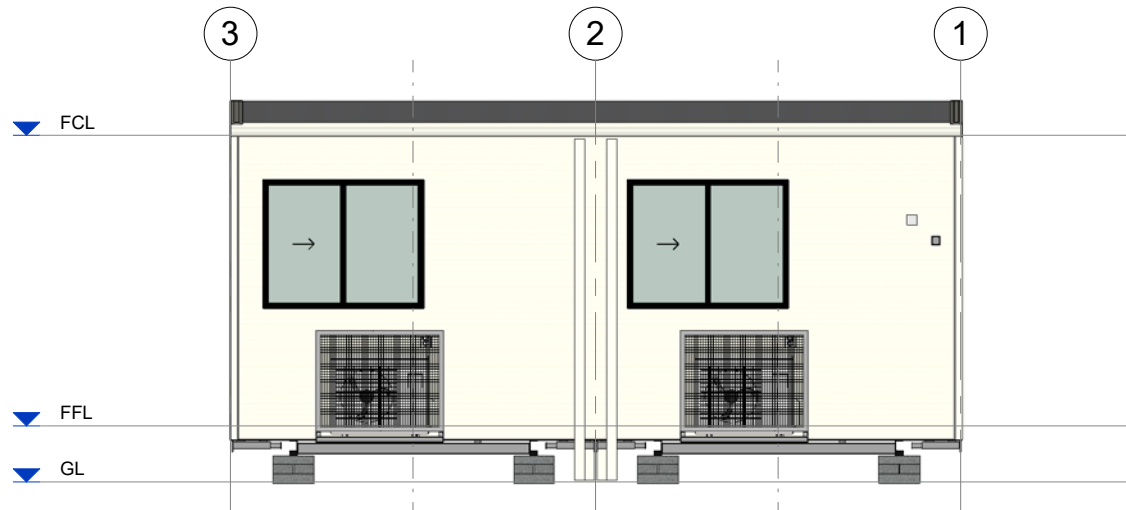
| | | | |
|----------------|------------------------------|-------------|-----------------------|
| CLIENT | ATCO STRUCTURES & LOGISTICS | TITLE | PLAN - STANDARD OFFER |
| DESCRIPTION | 12.0 x 6.9m SINGLE CLASSROOM | PROJECT No. | - |
| ADDRESS | - | SCALE AT A2 | 1 : 50 |
| DRAWING NUMBER | GLA010 -A200 | REVISION | A |



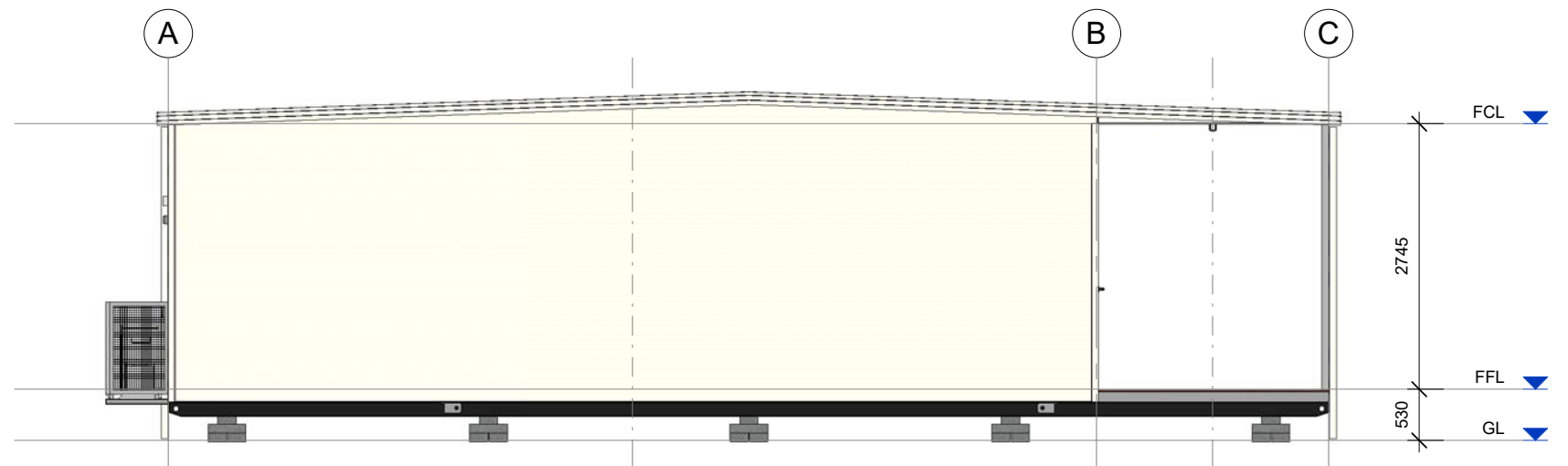
A ELEVATION
A200 1 : 50



B ELEVATION
A200 1 : 50



C ELEVATION
A200 1 : 50



D ELEVATION
A200 1 : 50

CONFIRM DETAILS OF SET OUTS, LEVELS AND CRITICAL DIMENSIONS ON SITE PRIOR TO SHOP DRAWINGS AND FABRICATION
 QUALITY CERTIFIED TO AS/NZS ISO 9001:2008
 BY SCH-QUAL INTERNATIONAL REGN No. 531
 DO NOT SCALE FROM THIS DRAWING. USE FIGURED DIMENSIONS
 OVERALL DIMENSIONS EXCLUDE EXTERNAL CLADDINGS U.N.O.
 ALL CONSTRUCTION TO COMPLY WITH NATIONAL CONSTRUCTION CODE OF AUSTRALIA AND APPLICABLE AUSTRALIAN STANDARDS
 THIS DRAWING REMAINS THE PROPERTY OF ATCO STRUCTURES & LOGISTICS PTY. LTD. (ATCO). IT MAY NOT BE REPRODUCED OR COPIED WHOLE OR IN PART WITHOUT WRITTEN AUTHORITY

| REV | DESCRIPTION | DATE | BY | CHKD |
|-----|-------------------|----------|------|------|
| A | ISSUED FOR REVIEW | 26.05.20 | A.C. | |
| | | | | |
| | | | | |
| | | | | |
| | | | | |

ATCO
 ATCO STRUCTURES & LOGISTICS PTY. LTD. PHONE: (07) 3412 8600
 55 TONKA STREET, LUSCOMBE, QLD 4207 FAX: (07) 3412 8699
 P.O. BOX 393, BEENLEIGH, QLD 4207 ABN: 71 083 902 309
 E-mail: ASLAu.Sales@atco.com

| | |
|--|----------------------------|
| CLIENT ATCO STRUCTURES & LOGISTICS | TITLE ELEVATIONS |
| DESCRIPTION 12.0 x 6.9m SINGLE CLASSROOM | PROJECT No. - |
| ADDRESS - | SCALE AT A2 1 : 50 |
| DRAWING NUMBER GLA010 -A300 | REVISION A |